



AX Series  
**Hands-Free Video  
Intercom with Integration**



**Commercial | Educational | Healthcare | Industrial**

## Features and Benefits

### Versatile capacity with Cat-5e wiring

Flexible system allows up to 8 master stations and a combination of 120 door stations, sub stations, or adaptors using common network cable.

### Reliable visitor screening, convenient door release

Visitors can safely be identified with clear audio and video prior to unlocking the door with the simple push of a button.

### Integrates with mainstream security peripherals

Integrate the AX Series into existing security components including CCTV systems, electronic access control, and telephone transfer.

### Provides security in remote areas

Reduce exposure to risk in remote locations by adding door stations to parking garages, stanchions, gates, and more.

### Monitor all entrances, inside and outside

Video door stations allow activity at each location to be seen and heard at the master stations.

### All, Group, and Selective Call

Master stations can be used to call all master stations, to call grouped master stations, and to selectively call individual master stations, door stations, and sub stations connected to the same system.

### Video output

Composite video output allows the video to be recorded or seen on a larger screen.

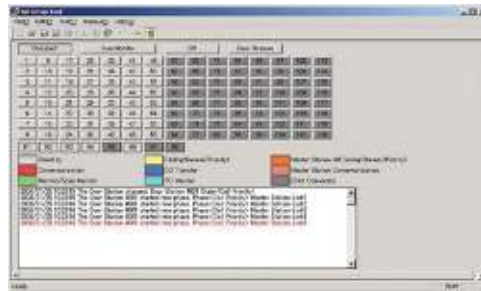


### Paging adaptor

Broadcast important announcements through a paging system using the AXW-PA1.

### Intuitive programming software

Features and functions are easily programmed using the custom software, included with the central exchange unit.



## Components

### Central Exchange Units: select 1 (required for system—includes programming software)



#### AX-084C

Central Exchange Unit

(supports up to 4 master stations and 8 door/sub stations)

3-7/16" H 16-9/16" W 13-3/16" D



#### AX-248C

Central Exchange Unit

(supports up to 8 master stations and 24 door/sub stations)

3-7/16" H 16-9/16" W 13-3/16" D

### Add-On Central Exchange Unit: select up to 3 (optional—based on number of door and sub stations selected)



#### AX-320C

Add-On Central Exchange Unit

(supports up to 32 door/sub stations)

3-7/16" H 16-9/16" W 13-3/16" D

# Components

## Door Stations and Indoor Sub Stations: mix and match up to 120



### AX-DV

- Video Door Station
- Aluminum die cast
  - Weather and vandal resistant
  - Surface mount
- 7-11/16" H  
3-15/16" W  
1" D



### AX-DVF

- Video Door Station
- Stainless steel panel
  - Weather and vandal resistant
  - Flush mount (back box included)
- 9-11/16" H  
5-3/4" W  
2-1/2" D\*



### AX-DV-P

- Video Door Station with HID® Card Reader (requires a third-party host and additional wire to power card reader)
- Stainless steel panel
  - Weather and vandal resistant
  - Surface mount (back box included)
- 9-5/8" H  
3-15/16" W  
1" D



### AX-DVF-P

- Video Door Station with HID® Card Reader (requires a third-party host and additional wire to power card reader)
- Stainless steel panel
  - Weather and vandal resistant
  - Flush mount (back box included)
- 11-5/8" H  
5-3/4" W  
2-1/2" D\*

\*Aiphone recommends a 2-1/2" minimum back box depth for all flush mount door stations.



### AX-DV

- Mullion-Mount Audio Door Station
- Plastic chassis
  - Weather resistant
  - Surface mount
- 6-5/16" H  
1-11/16" W  
7/8" D



### IF-DA

- Audio Door Station
- Plastic chassis
  - Weather resistant
  - Surface mount
- 5-1/8" H  
3-7/8" W  
1-1/8" D



### IE-JA

- Audio Door Station
- Stainless steel cover
  - Weather resistant
  - Flush mount (fits 2-gang box)
- 4-1/2" H  
4-9/16" W  
2-1/2" D\*



### IE-SS/A

- Audio Door Station
- Stainless steel panel
  - Weather and vandal resistant
  - Flush mount (fits 2-gang box)
- 4-3/4" H  
4-3/4" W  
2-1/2" D\*



### IE-SSR

- Audio Door Station
- Red mushroom call button
  - Stainless steel panel
  - Weather and vandal resistant
  - Flush mount (fits 2-gang box)
- 4-3/4" H  
4-3/4" W  
2-1/2" D\*



### AX-A

- Audio Sub Station
- Plastic chassis
  - Surface mount
- 7-1/16" H  
5-5/8" W  
2-1/8" D



### AX-AN

- Privacy Audio Sub Station
- Plastic chassis
  - Privacy button
  - Surface mount
- 7-1/16" H  
5-5/8" W  
2-1/8" D



### AX-B

- Audio Sub Station
- Plastic chassis
  - Semi-flush mount
- 8-3/16" H  
6" W  
2" D



### AX-BN

- Audio Door Station
- Plastic chassis
  - Privacy button
  - Semi-flush mount
- 8-3/16" H  
6" W  
2" D

## Master Stations: mix and match up to 8



### AX-8MV

- Video Master Station
- 3-1/2" LCD screen



### AX-8MV-W

- Video Master Station (recommended for an 8 x 8 system only)
- White chassis
  - 3-1/2" LCD screen



### AX-8M

- Audio Master Station

#### Shared Features:

- Hands-free or push-to-talk communication
  - Two talk channels
  - Composite video output from CEU/video master stations
  - All Call or Group Call to master stations
  - Scan monitoring
  - Wall or desk mount
- 6-7/8" H  
7-5/8" W  
1-7/8" D

# Components

## Power Supply

(two required per system)



### PS-2420UL

24V DC, 2A  
Power Supply  
6-9/16" H  
3-9/16" W  
2-1/16" D

## Accessories



### AXW-PA1

Paging  
Adaptor  
4-1/8" H  
2-1/2" W  
1-1/2" D



### AXW-AZ

CCTV Input Module  
1-5/8" H  
7" W  
4" D



### AXW-AVT

Media Converter Transmitter  
1-5/8" H  
7" W  
4" D



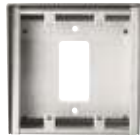
### AXW-AVR

Media Converter Receiver  
1-5/8" H  
7" W  
4" D



### AX-16SW

16-Call Add-On  
Selector for  
AX-8MV or AX-8M  
(max. 7 per master)  
6-7/8" H  
3-3/8" W  
1-7/8" D



### SBX-2G/A

Surface Mount Box for  
IE-JA, IE-SS/A, or IE-SSR  
4-13/16" H  
4-7/8" W  
4" D



### KMB-45

45° Mullion  
Mounting Bracket  
for IF-DA  
5-1/2" H  
5-1/2" W  
1-3/4" D



### SBX-AXDV30

30° Angle Box  
for AX-DV  
7-11/16" H  
3-7/8" W  
2-7/8" D



### SBX-AXDVF

Surface Mount  
Box for AX-DVF  
9-3/4" H  
5-7/8" W  
2-13/16" D



### SBX-DVF-P

Surface Mount  
Box for AX-DVF-P  
11-11/16" H  
5-15/16" W  
2-13/16" D



### EL-12S

Electric Door  
Strike for  
Wood Frames  
4-1/8" H  
13/16" W  
1-1/8" D



### RY-1824L

Form C Door  
Release Relay  
(1 per door)



### RY-ES

External  
Signaling Relay  
4-1/8" H  
2-7/16" W  
1-5/8" D



### IER-2

Call Extension  
Speaker  
4-3/4" H  
3-7/16" W  
1-1/8" D



### MCW-S/B

Desk Stand for  
AX-8MV, AX-8MV-W,  
or AX-8M (mounting  
hardware included)  
6-1/2" H  
6-1/2" W  
8" D

# Specifications

<b>Power Source</b>	24V DC—use two PS-2420ULs
<b>Communication</b>	Hands-free (VOX) or push-to-talk (simplex)
<b>Door Release</b>	Programmable dry contact, 24V AC/DC, 500mA—use RY-1824L for larger contact rating
<b>Wire Type</b>	Between Door/Sub Station, Master Station, and Central Exchange Unit: Cat-5e Power Supply to Central Exchange Unit and Add-On Central Exchange Unit: 2-cond., overall shield—use Aiphone 821802
<b>Distance</b>	Door/Sub Station to Central Exchange Unit and Add-On Central Exchange Unit: 980' Central Exchange Unit to Master Station: 980' Central Exchange Unit to Add-On Central Exchange Unit: 16' Power Supply to Central Exchange Unit and Add-On Central Exchange Unit: 16' (22 AWG) 33' (18 AWG)