

PHOTOELECTRIC BEAM SENSOR

The award of the Director General of Japanese Technological Agency

PXB- 50HF OUTDOOR 165ft (50m)

PXB-100HF OUTDOOR 330ft (100m)

PXB-200HF OUTDOOR 660ft (200m)



Factory



Airport



Residential



Parking



Power plant

PXB

The Choice of Professionals

Photoelectric Beam Sensors that combine stability and reliability

PXB- 50HF OUTDOOR 165ft (50m)

PXB-100HF OUTDOOR 330ft (100m)

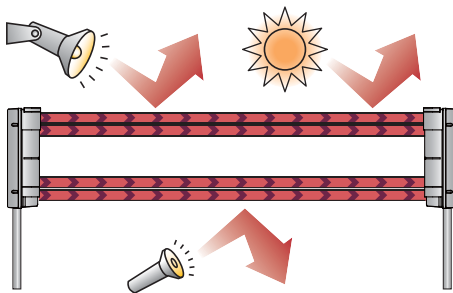
PXB-200HF OUTDOOR 660ft (200m)

High Performance with Reliability and Stability



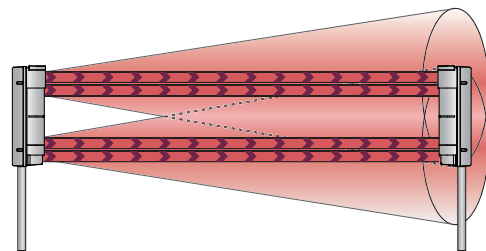
DOUBLE MODULATION

Double modulated beams are designed to distinguish the external lights. It increases the reliability in the outdoor security system. (50,000 lux light immunity)



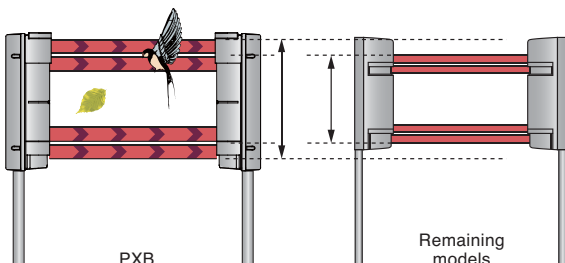
QUAD HIGH POWER BEAM

The beam power is 100 times of the minimum requirement. The beam distance is 10 times of the described specification. This high power beam maintains the ability to operate reliably in inclement weather.



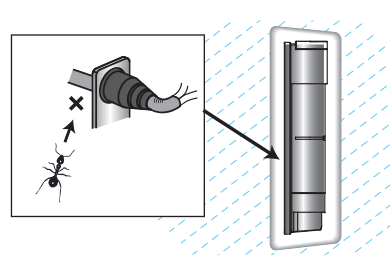
WIDE BEAM

The pitch between upper and lower beam is wider than previous models; drastically reducing False alarms initiated by birds and falling leaves.



IP65 HIGHEST RATING IN THE INDUSTRY

Water tight bushings and seals maintain device integrity from water, insects, and dust; further inclusion of a breathable membrane prevents internal condensation from affecting performance.





Receiver



ANTI-BIRD SPIKE

Keeps birds and small animals from roosting on the sensor, maintaining a clear detection path for increased reliability.

Anti-Bird spike



DRIP-PROOF HOUSING

Channels the elements (rain and snow melt) away from the optical surfaces of the sensor, avoiding false alarms caused by beam attenuation.

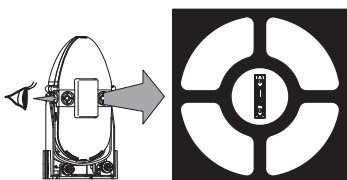


Enhanced features for faster and simpler installations



ADVANCED RETICLE SIGHTING SYSTEM

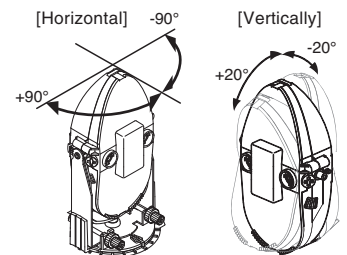
Enables a faster and easier alignment process.



INCREASED VERTICAL ANGLE ADJUSTMENT

The horizontal is still $\pm 90^\circ$

$\pm 20^\circ$ Better accommodates alignment on uneven terrain, when compared to existing models ($\pm 10^\circ$).



TARGET COLOR

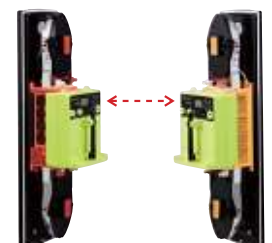
Structure colors are tuned to the Peak Wavelengths of the Human Eye Response (Photopic eye response), to be easily targeted in the beam alignment process.



BI-DIRECTIONAL WIRELESS ALIGNMENT CHECKER

One person can accomplish system alignment in a fraction of the time; for dramatic savings on labor costs. (sold separately)

Bi-Directional communication distance is max 200m.





Designed for environmental adjustment



LOW CURRENT CONSUMPTION

50% reduction in current consumption allows cost savings upfront (by reducing the required wire gauge on installation), and continues the savings for years to come with lower electrical consumption.



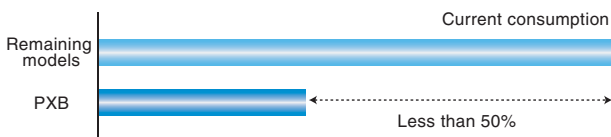
ECO-FRIENDLY

RoHS certified compliant: free from Lead, Mercury, Cadmium, Hexavalent Chromium, Polybrominated biphenyl, and Polybrominated biphenyl ether.



LIGHTENING PROTECTION

Maximum Lightening induced surge protection to 10,000VDC (normal mode) and 15,000VDC (common mode).



Optional accessories

- Housing case
<KH-160VS>
φ8.66"(φ22cm)×H63.11"(160.3cm)
 - Pole (2 pieces)
<KP-100/KP-100B>H39.37"(100cm)
<KP-150/KP-150B>H59.06"(150cm)
 - L Pole (1 piece)
<KP-80LS/KP-80LSB>
H31.50"(80cm)×D5.91"(15cm)
<KP-80LL/KP-80LLB>
H31.50"(80cm)×D11.81"(30cm)
 - Alignment wireless checker(2 pieces)
<ER-02>
 - Pole side cover (1 piece)
<BS-50X>
 - Pole cover <BP-200X>
-
- Pole (2 pieces)
<KP-48L>
H18.90"
(48cm)
 - Pole (2 pieces)
<KP-90L>
H35.43"
(90cm)
 - Heater(2 pieces)
<HTF-24A>
24V DC / 430mA

SPECIFICATIONS

Model	PXB-50HF	PXB-100HF	PXB-200HF
Detection system	Near infrared pulsed beam interruption system (TR-RE 4 beam simultaneous interruption)		
Infrared beam	Double Modulation LED pulse train		
Protection distance	Outdoor 165' (50m) or less	Outdoor 330' (100m) or less	Outdoor 660' (200m) or less
Max. arrival distance	1650' (500m)	3300' (1000m)	6600' (2000m)
Response time	0.05sec. to 0.7sec. (Variable at pot)		
Power supply	12 to 30V DC (Non-polarity)		
Current consumption	30mA or less	32mA or less	34mA or less
Alarm output	Dry contact relay output form C Contact action : Interruption time(Min.2sec.) Contact capacity : 30V (AC/DC) 1A (resistive load) Protective resistor		
Environmental output	Dry contact relay output form C Action : Activated when weather condition gets worse Contact capacity : 30V (AC/DC) 1A (resistive load) Protective resistor		
Tamper output	Dry contact relay (N.C.) Action : Activated when cover is detached Contact capacity : 30V (AC/DC) 0.1A (resistive load) Protective resistor		
Alarm LED	Red LED (Receiver) ON : when an alarm is initiated		
Attenuation LED	Red LED (Receiver) ON : when beam is attenuated		
Ambient temperature range	-31°F to +151°F (-35°C to +66°C)		
Beam adjustment	Horizontal : ±90°, Vertical : ± 20°		
Functions	Modulated beam frequency selection, Tone indicator, Environmental module Beam power selection, Transmitting power adjustment, Alarm memory indication, Programmed AGC, Auto-gain lock function, Monitor jack, Tamper, Response time adjustment, Upper / Lower beam switch, Wireless Alignment Checker connecting function		
Mounting positions	Outdoor, Indoor		
Wiring	Terminals		
Weight	Transmitter : 49oz (1400g) Receiver : 51.5oz (1470g)		
Appearance	PC resin (wine red)		
Accessory	Pole attachment, Anti-Bird spike, Screws, Instruction manual		

Please Note : This sensor is designed to detect intrusion and to initiate an alarm; it is not a burglary-preventing device. TAKEX is not responsible for damage, injury or losses caused by accident, theft, Acts of God (including inductive surge by lightning), abuse, misuse, abnormal usage, faulty installation or improper maintenance.

TAKEX

In Japan

Takenaka Engineering Co., Ltd.
83-1, Gojo-sotokan,
Higashino, Yamashina-ku,
Kyoto 607-8156, Japan
Tel : 81-75-501-6651
Fax : 81-75-593-3816
<http://www.takex-eng.co.jp/>

In the U.S.

Takex America Inc.
3350 Montgomery Drive,
Santa Clara,
CA 95054, U.S.A.
Tel : 408-747-0100
Fax : 408-734-1100
<http://www.takex.com>

In Australia

Takex America Inc.
Unit 16/35 Garden Road,
Clayton 3168 Victoria,
Australia
Tel : 03-9546-0533
Fax : 03-9547-9450

Takex America Inc.
Brisbane office : 1/50 Logan
Road, Woolloongabba
Queensland
4102, Australia
Tel : 07-3891-3344
Fax : 07-3891-3355

In the U.K.

Takex Europe Ltd.
Takex House, Aviary Court,
Wade Road, Basingstoke,
Hampshire, RG24 8PE, U.K.
Tel : (+44) 01256-475555
Fax : (+44) 01256-466268
<http://www.takexeurope.com>